

## sureanalysis™ Software Installation

---

**CAUTION:** your **sureshotgps™** MUST NOT BE CONNECTED to your computer until after installation of the sureanalysis™ software.

---

**Important Note:** sureanalysis™ requires Microsoft's .Net Framework to be installed on your computer. During installation .Net will be installed if the installer determines that the .Net framework is not installed.

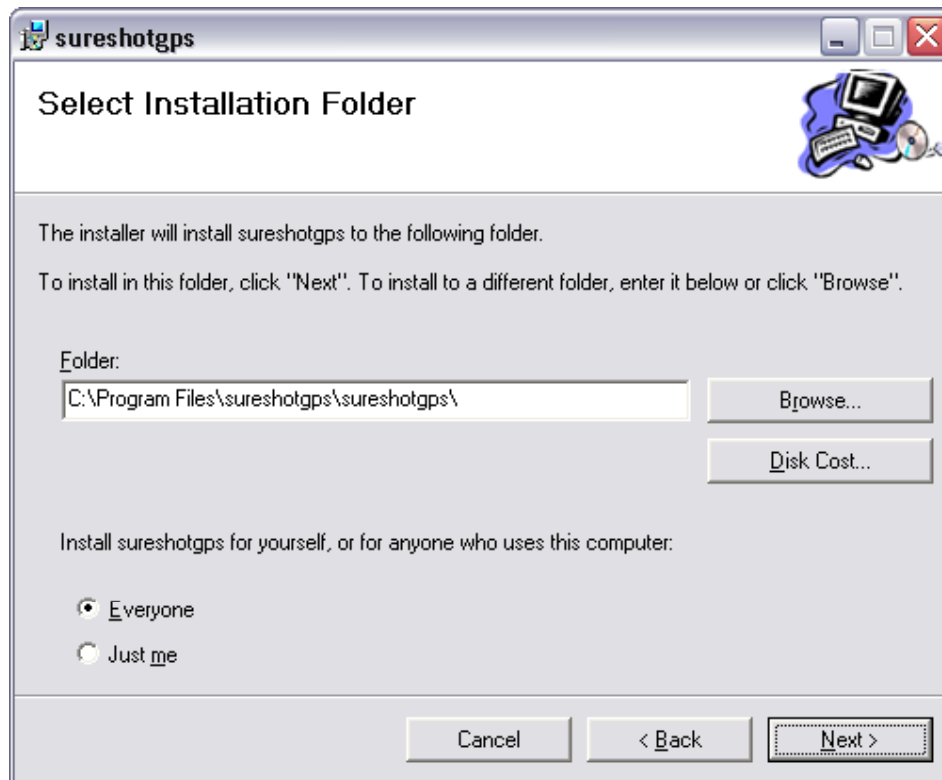
**Important Note:** sureanalysis™ is only supported on Windows 2000, XP and Vista operating systems.

To install sureanalysis™ follow the steps below:

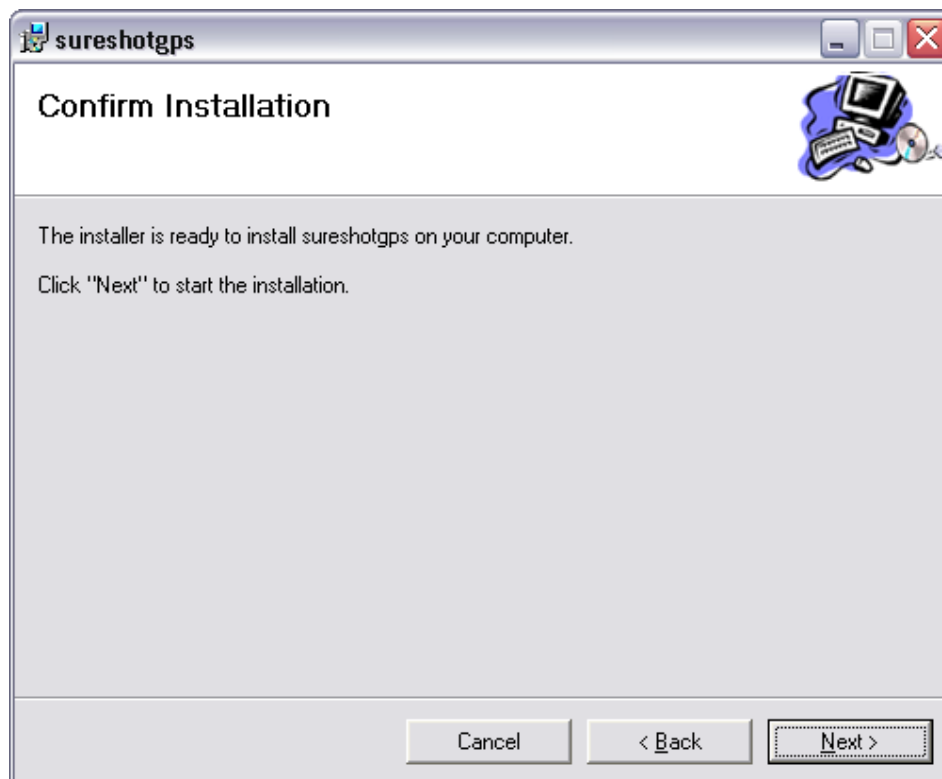
1. Load the sureanalysis™ version 3 CD into a CD drive on your computer.
2. The following screen will appear



3. Click "**Next >**"

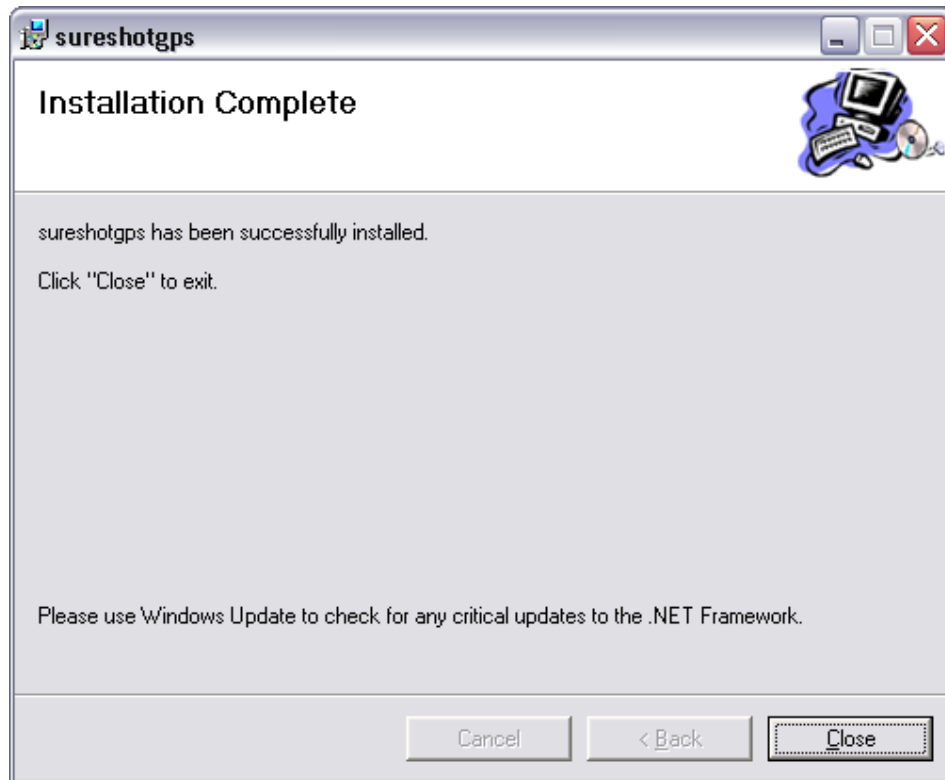


4. Accept the default folder by clicking "**Next >**"



5. Start the installation of the sureanalysis™ software by clicking "**Next >**"

6. After the program has been installed click **“Close”**



7. Connect your sureshotgps unit to a USB port on your computer and turn it on. You will be presented with the following screens depending on the operating system that is installed in your computer. Please refer to the operating system that is installed in your computer.

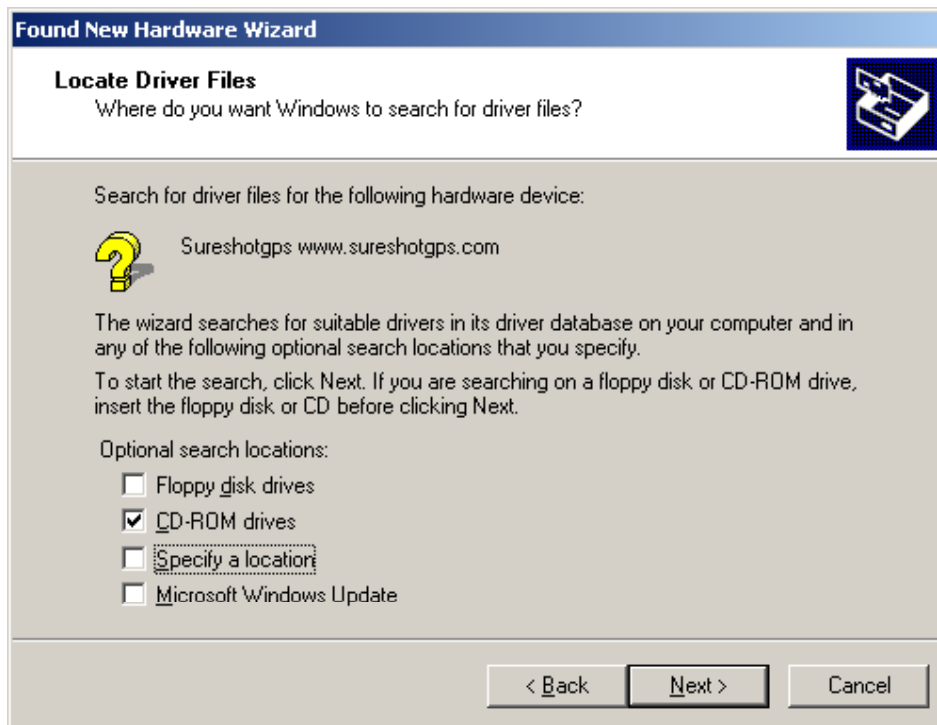
## Windows 2000 Operating System



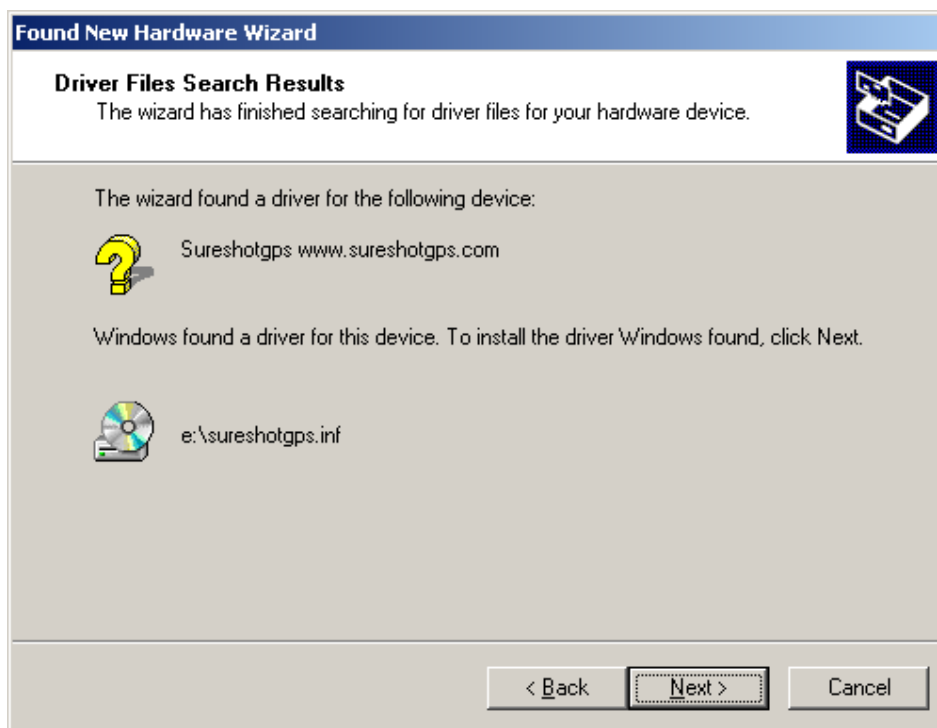
1. Click "Next > "



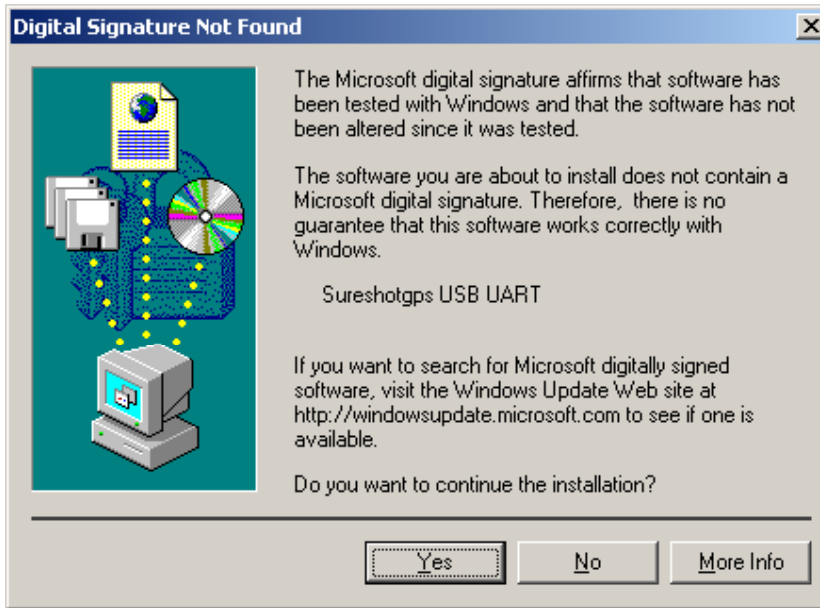
2. Select "Search for a suitable driver for my device (recommended) and then click "Next >"



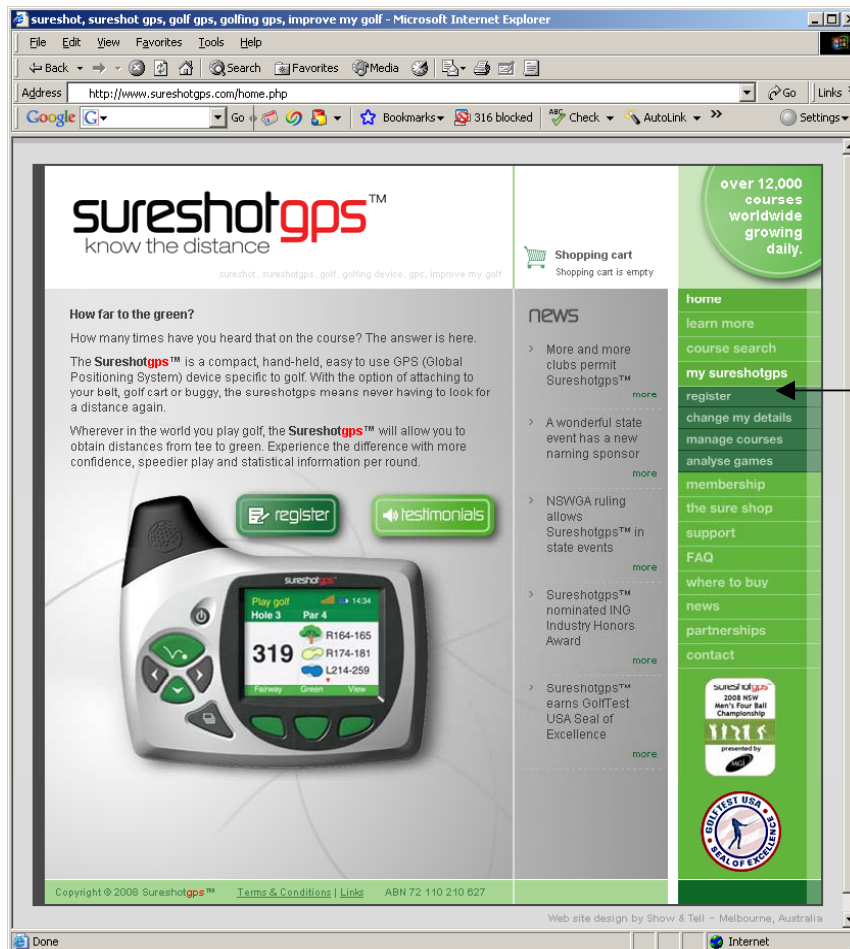
3. Select CD-ROM drives as the Optional search locations and then click "Next >" Windows should find the **sureshotgps.inf** file on your CD. Click "Next >" to install the driver.



4. If you are presented with the following screen you MUST click "Yes"



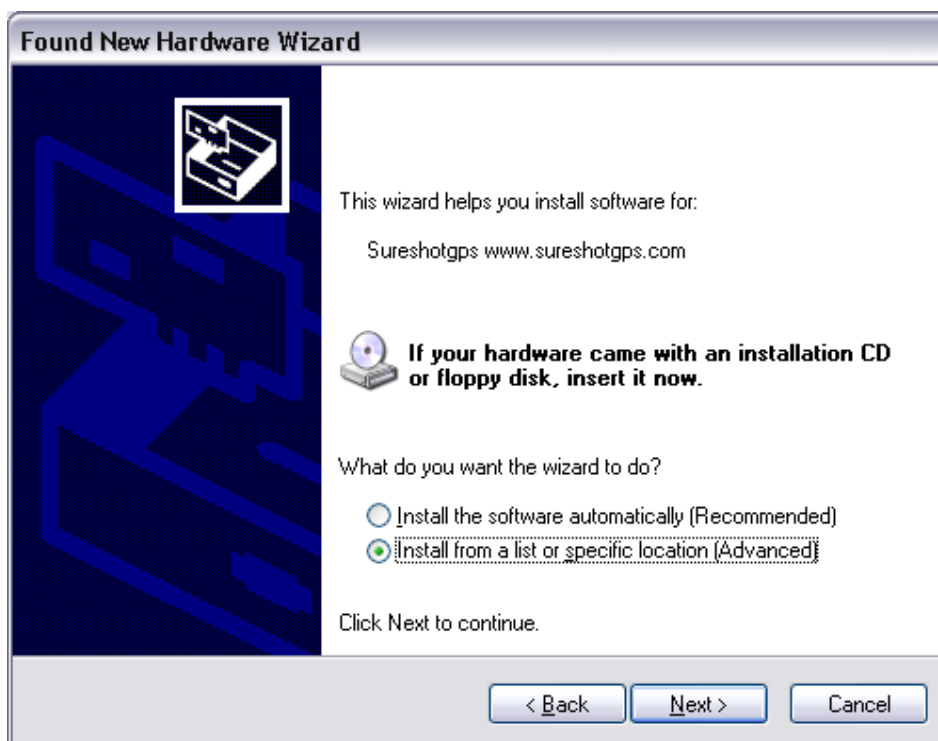
5. Click "Finish" to complete the driver installation.
6. Start your web browser and go to [www.sureshotgps.com](http://www.sureshotgps.com). Select from the right hand menu "my sureshotgps", click "register" and follow the instructions.



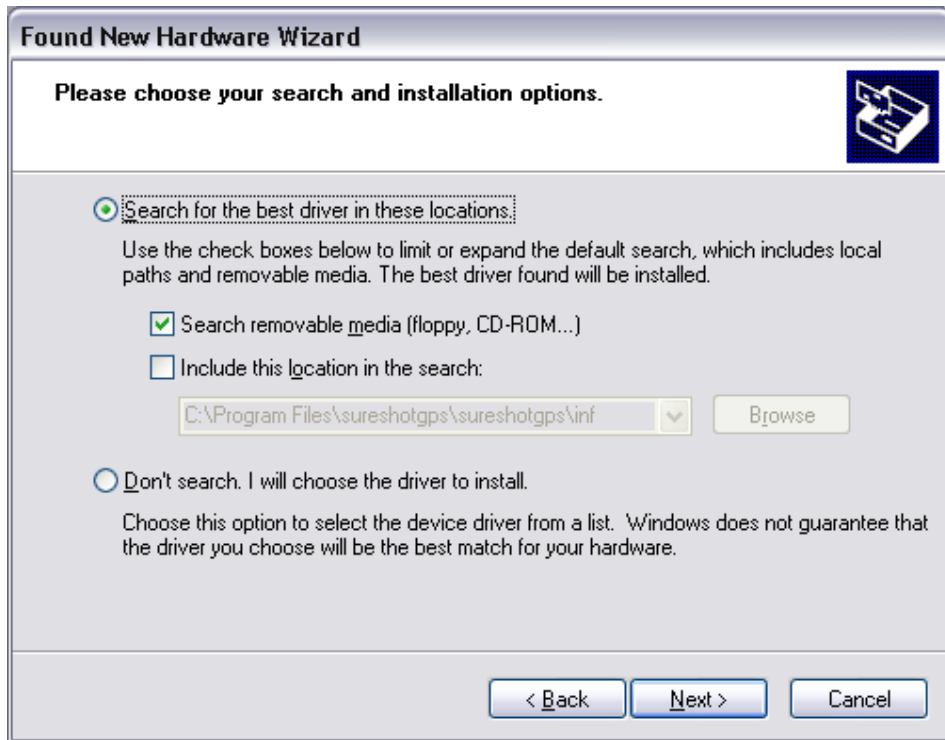
## Windows XP Operating System



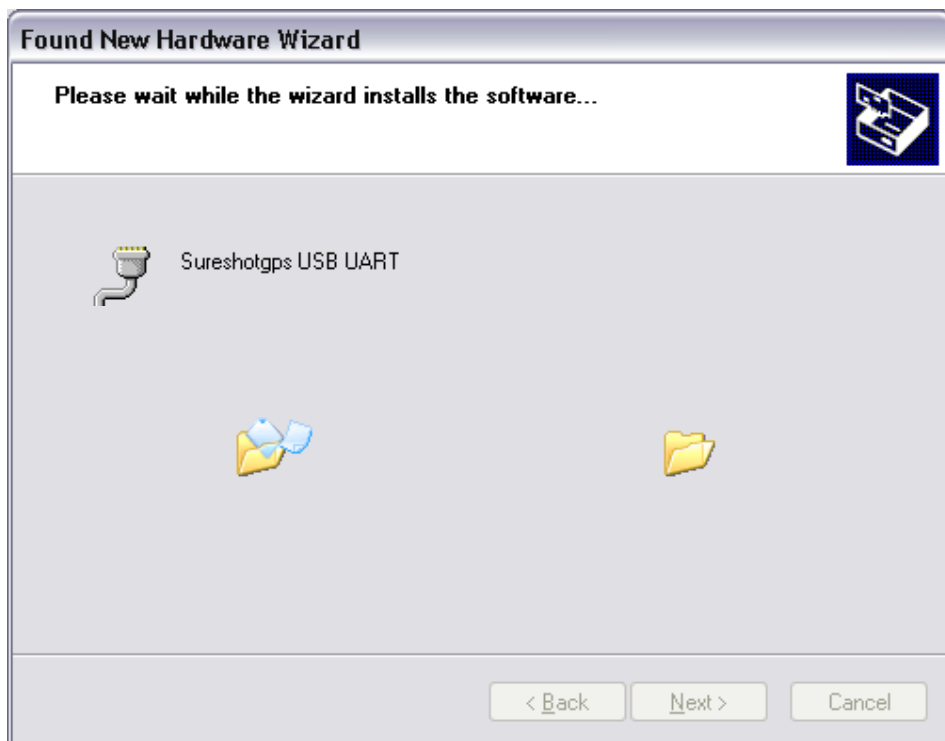
1. Select “No, not this time” from the list of options and click “**Next >**”



2. Select “**Install from a list or specific location (Advanced)**” and then click “**Next >**”



3. Check the **“Search removable media (floppy, CD-ROM...)”** check box and then click **“Next >”**

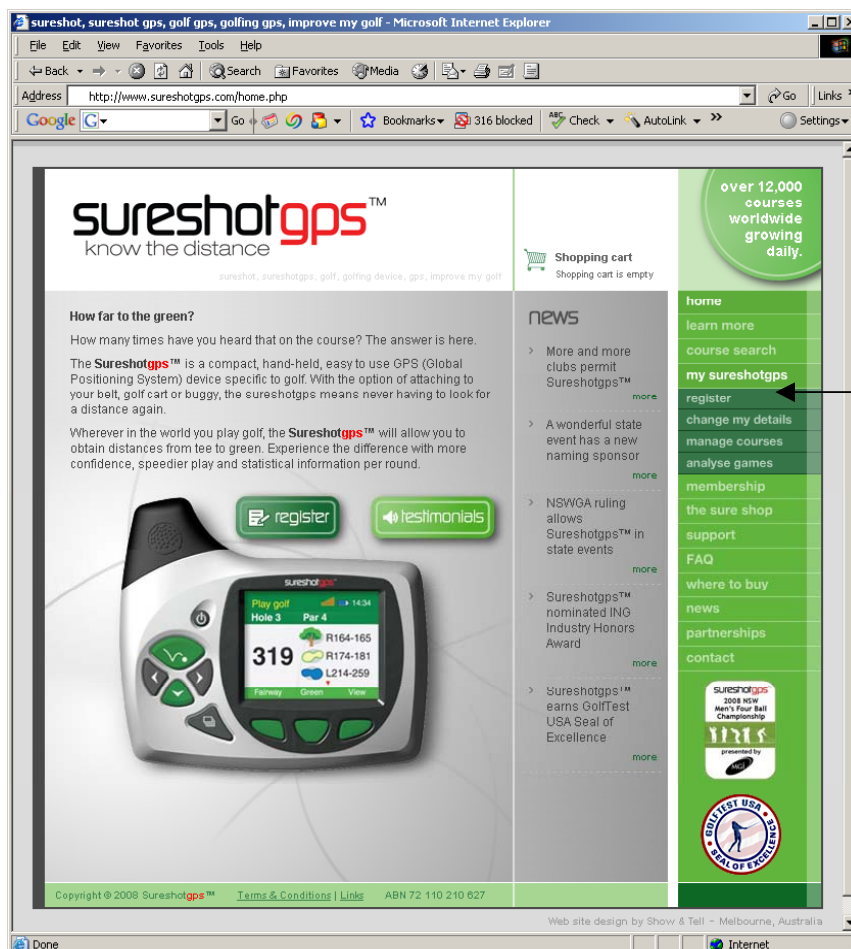


4. Wait while the driver is installed.

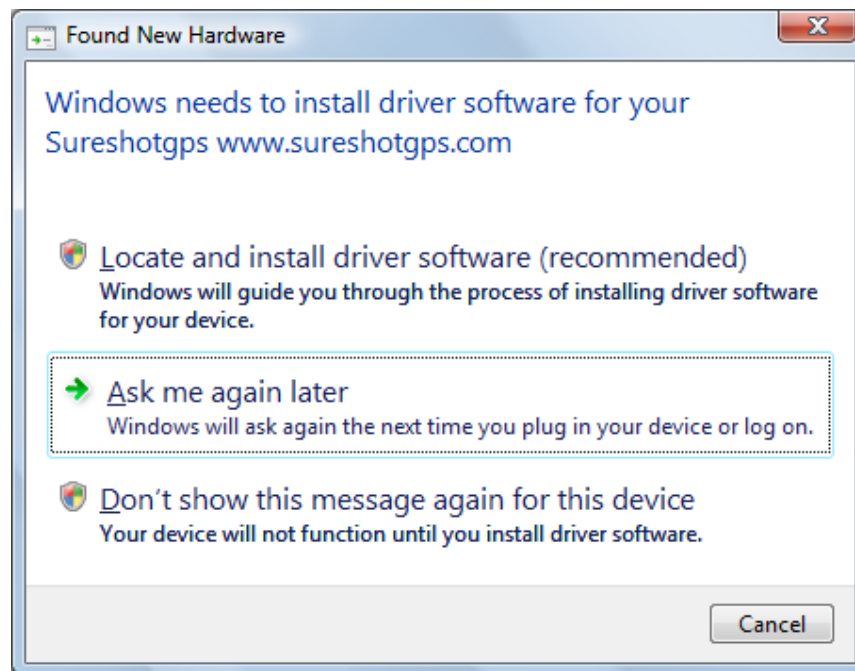
5. If you are presented with the following screen you MUST click “Yes”



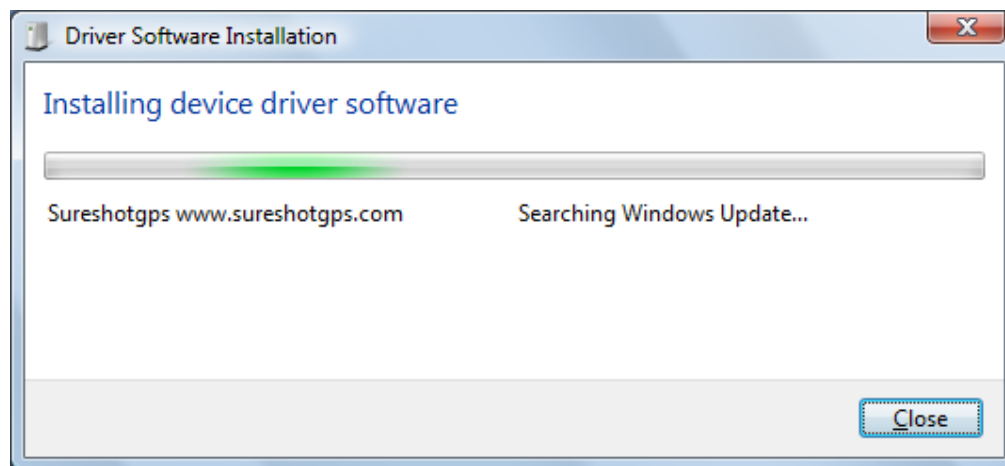
7. Click “Finish” to complete the driver installation.
8. Start your web browser and go to [www.sureshotgps.com](http://www.sureshotgps.com). Select from the right hand menu “my sureshotgps”, click “register” and follow the instructions.



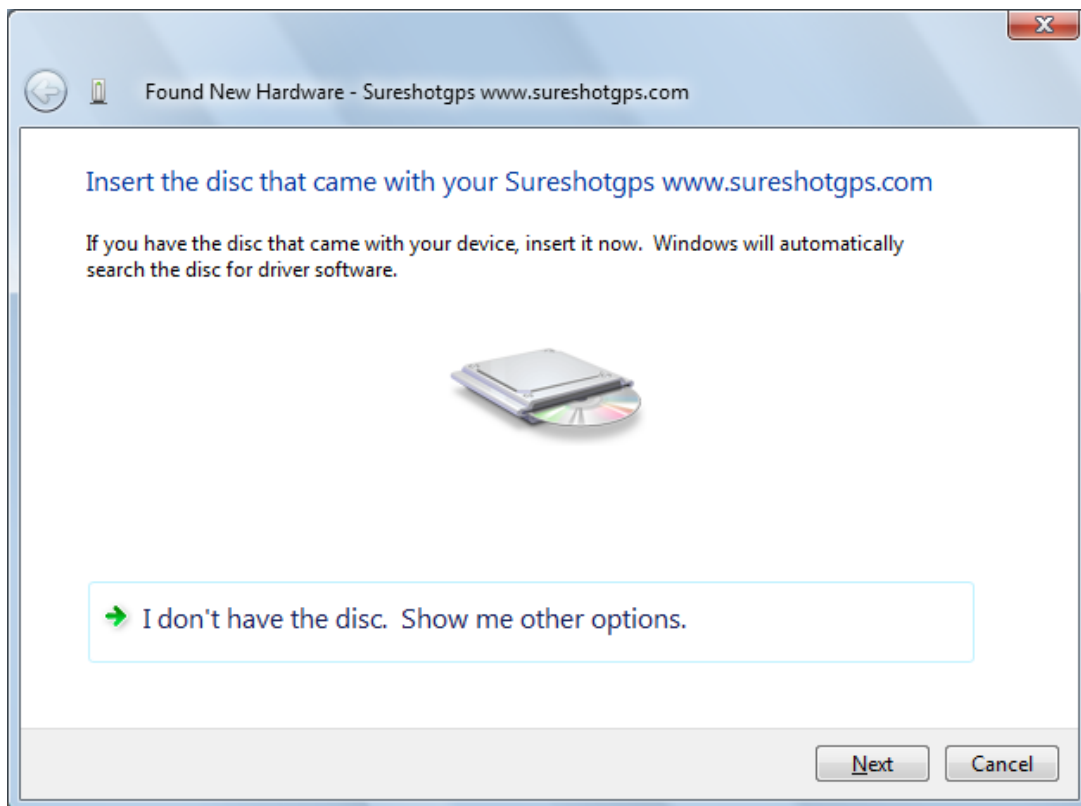
## Windows Vista Operating System



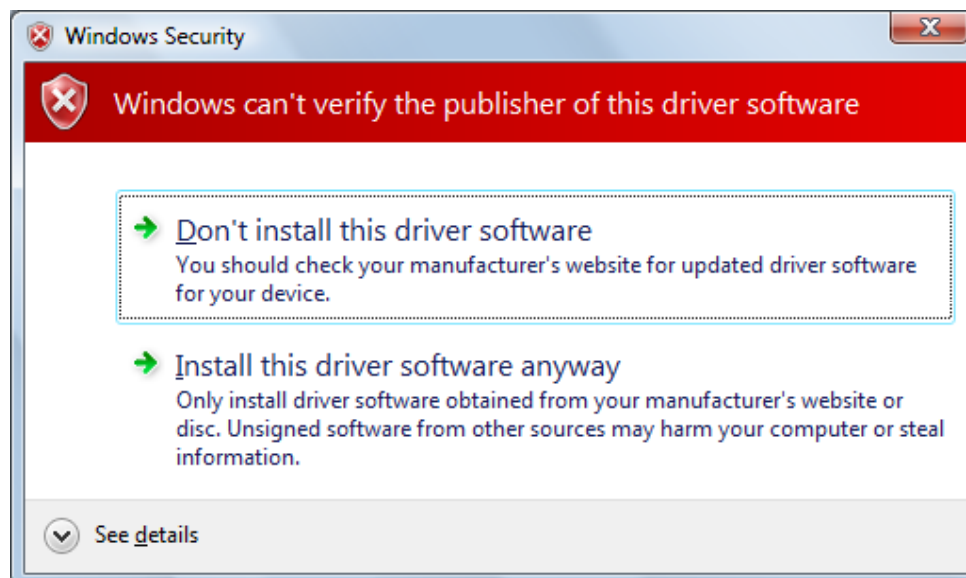
1. Click “**Locate and install driver software (recommended)**”. The following screen will be displayed.



2. Windows will fail to find an update and will display the following screen

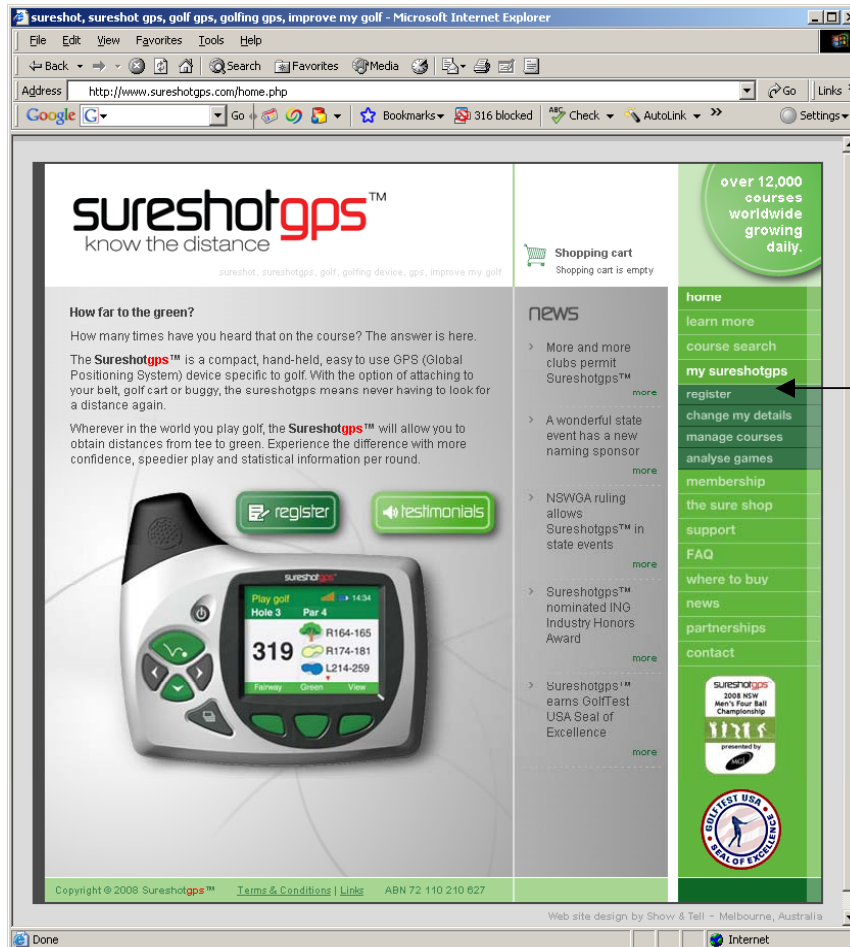


3. Make sure that the sureanalysis™ CD is still in your CD drive and click “**Next**”.
4. If you are presented with the following screen you **MUST** click “**Install this driver software anyway**”.



5. Wait while the driver is installed.
6. Click “**Close**” to complete the driver installation.

7. Start your web browser and go to [www.sureshotgps.com](http://www.sureshotgps.com). Select from the right hand menu “my sureshotgps”, click “register” and follow the instructions.



Click register to register your sureshotgps™